

CULTIVATED TERRITORIES

Towards a cultural and transition project Lab

Living Labs and Cultural-Territorial Experiments





**MINISTÈRE
DE L'EUROPE
ET DES AFFAIRES
ÉTRANGÈRES**

*Liberté
Égalité
Fraternité*

AViTeM

Agence des Villes et Territoires
Méditerranéens Durables



**İZMİR
BÜYÜKŞEHİR
BELEDİYESİ**



**CULLETTIVITÀ DI CORSICA
COLLECTIVITĀ DE CORSE**



**MÉTROPOLE
NICE CÔTE D'AZUR**

Foreword

“Art and culture can become key players in territorial planning, just like urban planners or developers, in order to support transitions.” (Maud le Floc’h, at the Vitrolles Open Forum, May 2025). AVITEM (Agency for Sustainable Mediterranean Cities and Territories), as lead partner, has set up the “Territoires Cultivés” project with this in mind: culture as a driver for territorial transformation .

Launched in October 2023, the project echoes the principles of the New European Bauhaus, which combines aesthetics, sustainability and inclusion in territorial transformation. It forms part of the “Clés en main” call for decentralised cooperation projects launched by the Ministry for Europe and Foreign Affairs.

It brings together three French local authorities—the Collectivité de Corse, the City of Nice and the City of Vitrolles— with the Metropolitan Municipality of Izmir in Turkey.

This project has made it possible to the establishment of a partnership with the École de Condé, with the aim of giving an operational and educational dimension to the challenges and prospects for action discussed during the various open forums. Students on the school’s Master’s programme in “Research, Design, Innovation and Development’ were thus tasked with devising demonstration projects illustrating the link between culture and territorial transition.

“Territoires Cultivés” is therefore a project for the sharing of expertise between several French and Turkish local authorities –led by AVITEM—and for the educational and professional application of these ideas.

Each partner organised the following:

- Nice Forum: 28–29 November 2024
- Vitrolles Forum: 23–24 May 2025
- Corsica Forum: 19–20 June 2025
- Izmir Symposium: 4–5 September 2025

The aim of these events was to foster dialogue between professionals in the fields of the environment, urban planning and culture, and to draw on the practical experience of these four local authorities to collectively produce guidelines and commitments that formed the basis of the “Manifesto of Mediterranean Cities of Culture and Ecology”. This Manifesto, co-drafted with the support of the group of associated experts and the AVITEM project team alongside the partner stakeholders, was signed at the Izmir Symposium and is intended to serve as a framework for a network of territories and stakeholders, designed to expand to include as many signatories as possible.

The programme is therefore part of a process that will extend beyond the current project, the ultimate aim being that the network thus established can thrive and develop, thereby ensuring the continuity and evolution of initiatives beyond the project’s boundaries, notably through a Cultivated Territories II project.

This project will therefore have enabled:

- to deepen reflection on culture as a driver of territorial transition by fostering concrete links between culture and planning for sustainable development;
- to collectively draft a Manifesto, a commitment endorsed and signed by the partner local authorities and open to all. This document invites cities and institutions to cooperate, integrate cultural approaches into planning and mobilise artists, residents and local authorities to build collective initiatives;

- to identify concrete examples of cultural and planning projects in the partner regions with a view to establishing living labs;
- to use this identification process to prepare applications for the next phase of the programme, Territoires Cultivés II, the aim of which will be the operational implementation of these living lab initiatives.

In parallel, the project also involves producing transferable booklets that serve as “guides to collective action”. These documents are co-produced by the AVITEM project team and the expert group “POLAU and associated experts”, comprising: Maud le Floc’h (cultural planner and director of POLAU), Jean-François Chougnnet (historian and cultural administrator), Valérie Astesano (director of culture and heritage, Vitrolles), Amine Benaissa (architect-urban planner, consultant), and with the support of Cleo Smits (cultural operator).

These publications build on practical experience and discussions arising from the forums and the Symposium.

They are structured around four booklets:

- **Booklet 1: Mediterranean culture as a card to play**

In the context of international reconfiguration: how can the Mediterranean’s long cultural history be a determining factor in the region’s future positioning?

- **Booklet 2: Culture as territorial engineering**

How can the cultural sector contribute to the ecological transition of territories?

- **Booklet 3: Towards a laboratory of cultural projects and transitions**

This booklet outlines the design of experimental

projects in each partner territory, providing exemplary illustrations of collaboration between actors in territorial transition (planning, ecology) and cultural actors.

- **Booklet 4: Feedback from the forums**

A summary of the round-table discussions, exchanges and opening addresses



Summary

- **PARTIE I - INTRODUCTION**
 - Background to the production of this booklet 8**
 - A** Towards a project lab for “culture and territorial transitions” 10
 - B** A living lab Programme to bring the ‘Cultivated Territories’ initiative to life..... 12
- **PARTIE II - Experimental projects of the cultivated territories network: initial intentions14**
 - NICE** The marine protected area by and for all 16
 - Inspiring references 20
 - A discovery hall, a cultural centre at Gare Sud 25
 - Inspiring references 28
 - VITROLLES** Development of the Fontblanche cultural site..... 30
 - Inspiring references 34
 - CORSE** TerraAcqua, Land-Water 36
 - Inspiring references 40
 - IZMIR** Revitalisation of the Alsancak district, park and site 44
 - Inspiring references 48
- **PARTIE III - CONCLUSION**
 - Towards a second operational phase50**
- **Appendix**
 - APPENDIX I** Form / Questionnaire..... 55
 - APPENDIX II** Benchmark / Inspiring references 60

PART I - INTRODUCTION
**BACKGROUND TO THE
PRODUCTION OF THIS BOOKLET**



This booklet 3, 'A Living Labs Programme', brings together initial experimental intentions for prototype projects combining urban planning, culture and the environment. These were outlined by the local authorities partnering the 'Territoires Cultivés' project, AVITEM and the expert committee. These proposals include an operational focus and the establishment of coalitions of partner stakeholders.

It is also based on a benchmark and a methodological note (questionnaire in the appendix). These elements cover topics ranging from the initial framework to governance. They have helped to guide discussions and inform decisions relating to specific projects:

- In Vitrolles, the development of the Fontblanche cultural site
- In Corsica, *TerraAcqua*, the Ascu-Moltifau watershed with the Arterra association
- In Izmir, a project to revitalise the Alsancak district - park and exhibition site.
- In Nice, various possibilities including a marine protected area by and for all and a Gare Sud cultural centre

The initiative was launched ahead of the French local elections in March 2026. Supported by the AVITEM project team, the French partners proposed project "intentions" that could be led by various departments (urban planning, culture, environment, community life, etc.)

At the time of writing, the Living Labs presented have not yet received final political approval. They may, where appropriate, contribute to the preparation of an application under the Territoires Cultivés 2 call for projects for a continuation of the projects in 2027/2028.

A ○ Towards a laboratory for cultural projects and territorial transitions

In a turbulent world where uncertainties, threats and crises affect all regions, it is important to rethink how we intervene in and for regions. The “soft” approach as much as the “hard” one. This approach requires new ways of tackling planning and urban development. By paying attention to what is already there, by bringing together different perspectives, and by adopting a “side-step” approach that facilitates everyone’s participation. The use of alternative artistic and cultural methods is a lever for action (see Booklet 2). Certain artistic acts are indeed developed in dialogue with their contexts. Their ability to represent and engage audiences goes beyond mere embellishment or urban animation. They tell stories; they create projects.

The partners of the “Territoires Cultivés” programme believe in these levers for transformation in the field of territorial transitions and in the value of a network of experimentation to initiate concrete actions.

The forums and symposium enabled cultural and territorial stakeholders to come together around this convergence of arts, territories and transition. This has resulted in contemporary approaches that can be found in the “Territoires Cultivés” booklets and in the Manifesto of Mediterranean Cities of Culture and Creation.

It has also led to the launch of Living Labs, i.e. regional project initiatives aimed at integrating cultural approaches as closely as possible with issues of regional transformation.

1. These associated initiatives are action programmes designed to facilitate transitions and their engagement and ownership
2. Living labs are envisaged as demonstrators to foster a systematic integration of culture within processes of change

Against a backdrop of questioning traditional models of urban development and planning, the premise of living labs is to help reintroduce a shared, living narrative into the processes of territorial transformation. Cultural dynamics thus help to co-construct shared visions of the future of a neighbourhood or a landscape. They use sensory means to represent what cannot be seen with the naked eye, to convey complexity, and to open up dialogue, particularly with a view to reconnecting individuals with their environments



B ○ Living Labs to bring the “Territoires Cultivés” initiative to life

The Living Labs of the “Territoires Cultivés” network are proposals for multi-year projects centred on development and cultural initiatives.

Cultural initiatives accompany the various stages of the project. In particular, they channel community dynamics, generate new visions, and enrich architectural or urban planning.

For the creative and cultural sector, this is an opportunity to develop new commissioning frameworks: integrated artistic interventions, site-specific works, participatory creations, etc.

- **What is a Living Lab?**

A Living Lab is an open innovation research method focused on developing innovative solutions, in which citizens, residents and users are regarded as key stakeholders.

The Living Lab programme of the Cultivated Territories network consists of regional experiments spanning several years that encourage stakeholders to work across disciplines. It aims to integrate cultural initiatives into urban planning and development projects in order to make reveal new methods of project design and implementation (engineering and ingenuity).

● Why do this?

The objective is to help build shared narratives around the projects and to establish a programme of cultural, participatory and creative activities centred on the project's key themes (transition, alert, transformation, etc.).

- These cultural initiatives aim to shed light on often technical subjects. They help engage citizens through more accessible representations
- They involve the entire chain of project stakeholders, as well as local residents, associations, technical agencies, institutions, etc.
- This programme may be proposed by a commissioned programme coordinator, a coalition of local stakeholders, or the relevant departments. It must take particular care to align with the project and to feed into it (and vice versa)

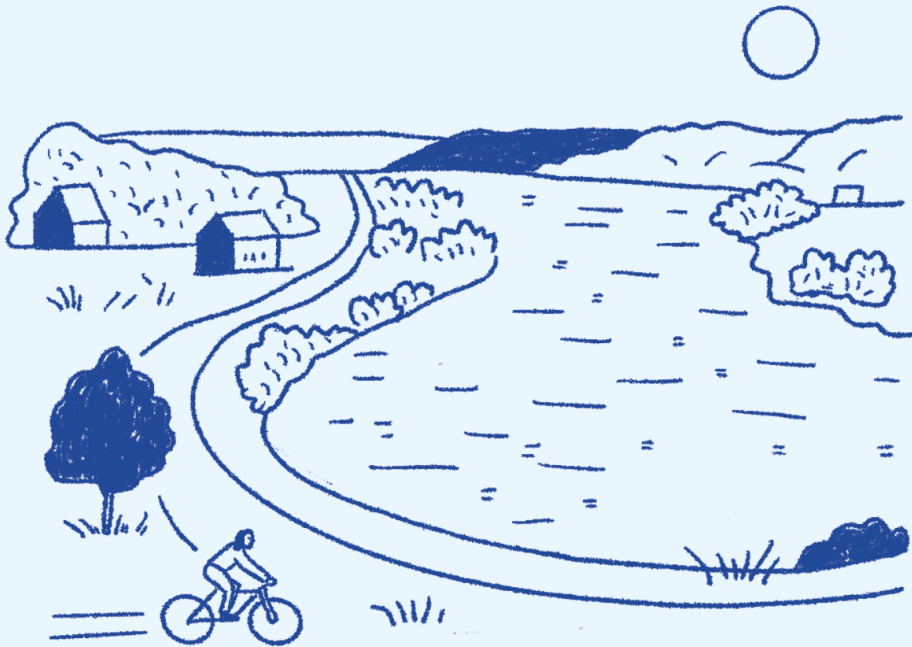
The Living Lab programme involves the various local authorities within the Territoires cultivés network that are simultaneously experimenting with integrating a cultural approach into a transformation project. It enables the creation of a learning community that meets throughout the course of the experiments.

● Under what conditions?

For this convergence of cultural approaches and territorial transitions to yield lasting results, it requires:

- Strong political backing for cooperation between departments, to move beyond sectoral thinking
- A shared value system (a charter) to guarantee the quality of the process and its social and environmental outcomes
- Interdisciplinary skills capable of bridging the gap between cultural dimensions and territorial challenges

PARTIE II
EXPERIMENTAL PROJECTS
OF THE TERRITOIRES CULTIVÉS
NETWORK: INITIAL PLANS



NICE

→ The marine protected area by and for all

Towards a cultural and participatory approach to the label,
City of Nice

→ Gare Sud : une halle de la découverte et un centre culturel

A contemporary cultural role for a heritage site,
City of Nice

VITROLLES

→ Development of the Fontblanche cultural site

A space for culture and nature connected to the town,
City of Vitrolles

CORSE

→ TerraAcqua, Earth-Water

Biodiversity and cross-fertilisation of knowledge
in the Ascu-Moltifau catchment area,
Arterra Association - Laboratoriu Culturale

IZMIR

→ Refreshing the Alsancak neighbourhood - park and exhibition site

Cultural support for the sustainable green zone
concept - revitalisation of public space,
The management of the Mediterranean branch of
the Izmir Metropolitan Municipality Academy

NICE

The marine protected area by and for all

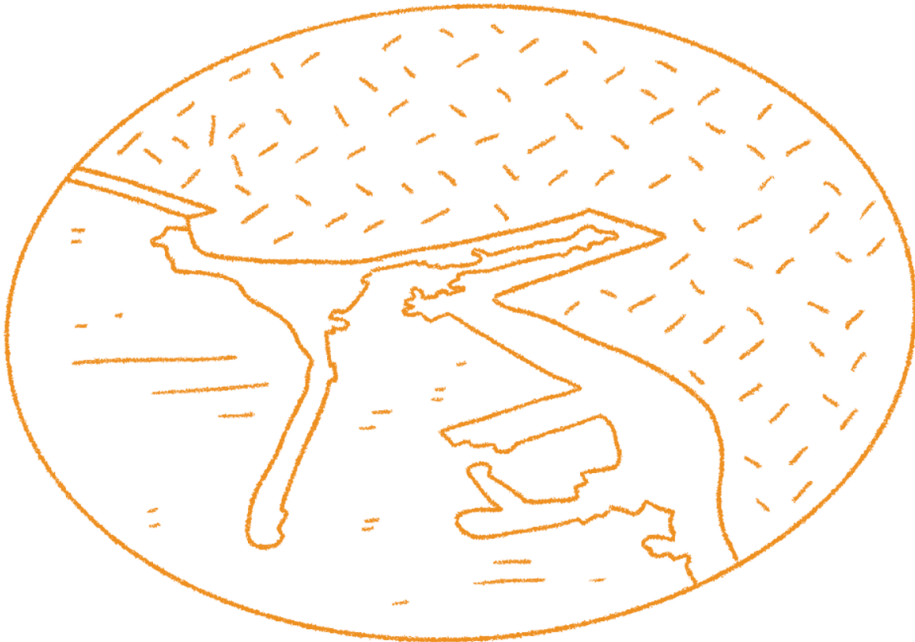
Towards a cultural and participatory approach to the label

By whom? City of Nice

With whom? Nice Côte-d'Azur Metropolis, government departments (DDTM), local stakeholders

Where? Baie des Anges - Nice

When? From 2026



- **Description**

Nice is set to become the first city in the Mediterranean to establish a marine protected area along an urbanised coastline (joint signing on 23 January 2026 of the inter-prefectural decree on the protection of natural marine habitats along the coastline by the municipality of Nice, the Prefect of the Provence-Alpes-Côte d'Azur region, the Maritime Prefect for the Mediterranean and the Prefect of the Alpes-Maritimes)

Iconic features of the city of Nice, the Baie des Anges and the Port of Nice bring together environmental protection challenges and a network of stakeholders, inseparable from the transformation of the Côte d'Azur coastline. The marine protected area thus provides an opportunity to engage in dialogue and raise awareness of this space for territorial innovation, and to work with the various stakeholders to develop concrete solutions for marine protection.

The Living Lab aims to bring the recent certification to life collectively - going beyond the regulatory framework - through a programme of initiatives and events, and by bringing together a wide range of key stakeholders: local residents, environmental organisations, cultural organisations, fishermen, tourism professionals, training specialists, students, and so on:

Regular meetings between stakeholders and spaces for dialogue (needs, solutions and expectations) through various cultural and participatory expressions help to embed marine conservation in the life of local neighbourhoods: regular events (festivals, open days, conferences), multimedia resources (videos, social media, testimonials) to widely share best practices and examples,

The living lab enables the participatory development phase initiated by the city to be extended, notably by continuing the reflection and actions arising from the collective workshops. These workshops have indeed helped to foster a shared vision

of the sea (fishermen, recreational boaters, restaurateurs, beach concessionaires, water sports enthusiasts, walkers, etc.)

- **Steering and operational coordination**

City of Nice

- **Partners to be involved**

- Local authorities (towns, metropolitan area, department, Sud region)
- Neighbourhood associations (culture, communities, art, citizens)
- Higher education institutions
- Yachting/tourism stakeholders (maritime sector)
- MAMAC
- Tourist Office
- The Conservatoire du Littoral
- The Mediterranean Institute for Biodiversity and Marine Ecology
- Mediterranean oceanographic institutes
- ...

Others partners:

- Associations: La Mouette - Les Pointus de Nice and Collectif du Port (La Mouette, ANAO, Bleu Gorgone)
- ASPTT Nice Côte d'Azur
- Del'ArT
- CDMM
- Culture et Loisirs du Port (A.C.L.P.)
- Port To Be #NICE
- Committee for the Defence of the Port Districts and the Environment
- ESRA School

- Sailing Club
- Libraries
- ...

- **Budget and funding**

City of Nice, local authorities and partners

- **Key considerations**

Building on the participatory momentum initiated by the City of Nice during the bid process now presents an opportunity to collectively devise a series of participatory arts and science initiatives, as well as public events for local residents and tourists. This momentum would help strengthen the collective capacity to care for the sea. This ongoing programme must be led by the local authority

- **Next steps**

- Deliberation by the City of Nice to promote the “AMP” label
- Reflection on coordination, governance and participatory dynamics
- Joint drafting with the various stakeholders of a scenario or scenarios for a programme linked to the AMP
- Establishment of a body (working group or committee) to spearhead cultural projects for marine conservation

Inspiring references

- **Mar Menor, recognition of legal personality**

Why? This is the first time in Europe that a natural ecosystem has been granted legal personality, adopted on 30 September 2022.

The law recognises the legal personality of the Mar Menor lagoon (in Spain) as an “indivisible biological, environmental, cultural and spiritual entity”.

This lagoon has suffered from pollution caused by intensive agriculture; on several occasions, hundreds of fish have died from lack of oxygen.

How? Following “the disappearance of 85% of the flora, and in 2019 and 2021 the mass die-off of marine fauna, which washed up by the tonne on the lagoon’s shores” (Eduardo Salazar) – a citizens’ campaign circulated a petition and led to the adoption of a law.

Who? The largest coastal lagoon in the Spanish Mediterranean / one of the largest in the western Mediterranean, bordering the sea.

A citizens’ campaign – Teresa Vicente, a philosophy lecturer, who initiated a petition (over half a million signatories) and Eduardo Salazar, a lawyer and professor of public law, representing the legal entity Mar Menor in court

When? In 2022

Where? Southern Spain (area of 135 km²)

Contact/link <https://www.wildlegal.eu/post/decryptage-mar-menor-la-lagune-espagnole-et-ses-nouveaux-droits>
<https://www.iea-nantes.fr/fr/actualites/lagune-mar-menor>

- **Underwater landscape plan for the calanques national park**

Why? An innovative approach to developing and disseminating knowledge of underwater landscapes

A landscape plan that focuses on disseminating knowledge to the public through cultural initiatives

How? Underwater landscape plan commissioned by the Calanques National Park

Multidisciplinary study: landscape architects, oceanographers, historians, and maritime practitioners

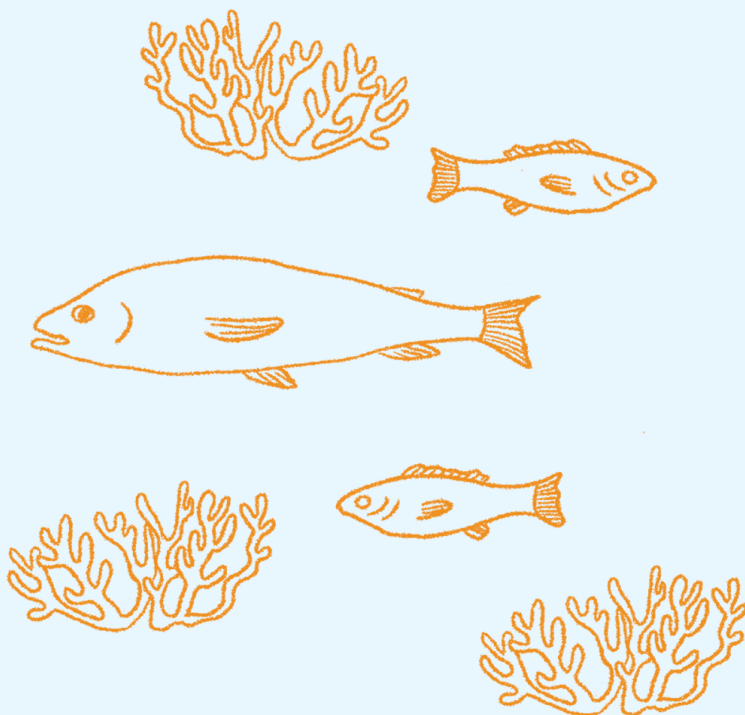
Strategic objectives (to provide a comprehensive overview of underwater landscapes and the issues surrounding them in order to facilitate public action); operational objectives (to support the conservation of underwater landscapes and their biodiversity); educational objectives (to increase and disseminate knowledge on the subject, and to act as a bridge between scientists and those who work at sea) and knowledge of underwater landscapes

Who? The Calanques National Park, Atelier coloco landscape architects, Andromède oceanography, Pierre David and Gilles Clément

When? 2019

Where? The underwater area of the Calanques National Park

Contact/link https://www.calanques-parcnational.fr/sites/calanques-parcnational.fr/files/pncal_ppsm_janvier_2023.pdf



- **Methodological guide from the coastal conservatory on**
 - Why?** A methodological guide addressing the sensitive dimension of the landscape approach
Highlights the potential for dialogue and mediation regarding landscapes
 - How?** A methodological guide offering tools for analysing landscapes and approaches to coastal projects
Surveying, contemplation and drawing to understand landscapes
Landscape is presented as a sensitive entry point that facilitates dialogue with the public: awareness-raising can take the form of coastguard activities, artistic initiatives or works, and discussions with surveyors acting as mediators
 - Who?** The Conservatoire du littoral
Produced by: Alain Freytet, qualified landscape architect
 - When?** 2019
 - Where?** The French coastline
 - Contact/link** file: ///C: /Users/33768/Downloads/ Guide-paysage-PDF.pdf
<https://www.conservatoire-du-littoral.fr/41-paysages.htm>

- **Marine educational areas**

Pourquoi ? Involving schoolchildren in the care of coastal ecosystems - An educational area is a small natural area managed in a participatory manner by pupils from a primary school, secondary school or sixth form college

A programme overseen by the OFB, which is also available for non-coastal environments

How? The Coastal Educational Areas programme enables a school to take responsibility for a small section of the coastline: it is supported by biodiversity facilitators who teach pupils how to look after it

To educate the youngest children in eco-citizenship and sustainable development

Reconnecting pupils with nature and their local area

Fostering dialogue between pupils, maritime stakeholders (users, economic actors) and natural area managers...

Who? Schools from primary to secondary level (the first was a primary school in French Polynesia)

The French Office for Biodiversity (OFB)

When? 2014-2015

The concept of educational areas was launched in 2012 in the Marquesas (French Polynesia)

Where? In France and French overseas territories

Contact/link <https://www.ofb.gouv.fr/les-aires-marines-educatives>
aireseducatives@ofb.gouv.fr

NICE

A discovery hall, cultural centre as part of the Gare Sud project

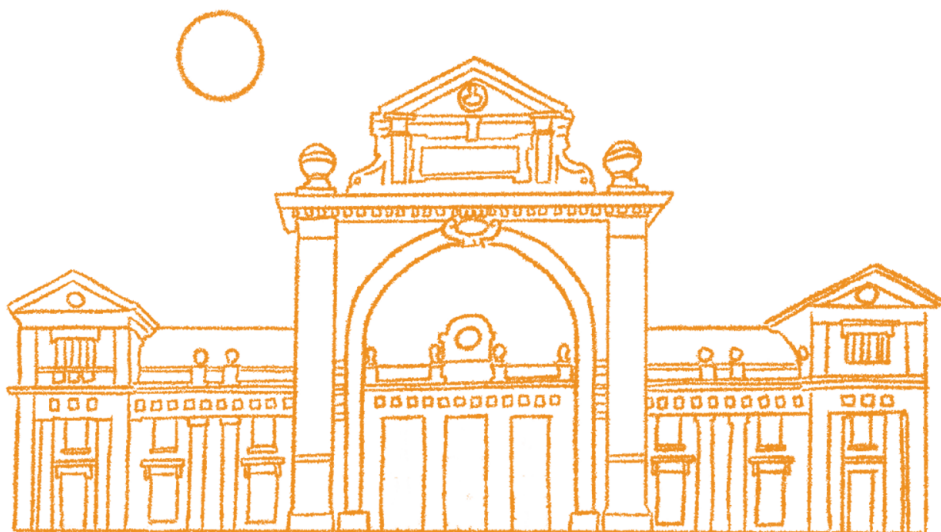
A contemporary cultural role for a heritage site

By whom? City of Nice

With whom? Nice Côte d'Azur Metropolitan Area, cultural organisations, SNCF

Where? Nice

When? To be confirmed



- **Description**

The Gare du Sud, the former terminus station of the Chemins de Fer de Provence, is a listed building (opened in 1892). It was recently reclaimed by the City Council following the abandonment of the food hall concept. **The next project could be centred around a central square, serving as an exhibition space; documentary areas; a games library, a fablab, and an educational kitchen.**

Located in the heart of the city, in a lively, working-class neighbourhood, the Gare du Sud already houses a library, and with a view to fostering cultural and social diversity, the living lab could help shape the project around the intersections of culture, ecology and the Mediterranean.

- **Why a living lab?**

- **To define, in an open and collaborative manner,** the programme for a Mediterranean cultural and ecological hub, at the crossroads of local and international influences
- **To approach the cultural project** from the perspective of “culture and transitions”, combining cultural expressions, innovative spatial planning, ecological transition, citizen engagement and Euro-Mediterranean outreach

- **Management and operational coordination**

City of Nice

- **Partners to be involved**

- Public sector stakeholders, cultural stakeholders, architects, urban planners and local associations.
- Cultural institutions such as the MAMAC, the 109, etc.
- Community centres
- École de Condé

- **Budget and funding**

To be determined

- **Timetable and timeline**

To be determined

- **Key considerations**

The narrative and the cultural and scientific vision that the cultural centre aims to promote are central to its ambition. Striking a balance with cultural stakeholders, local project leaders and the cross-disciplinary dimension requires a preliminary phase of collective intelligence and partnership-building at various levels..

- **Next steps**

- Set up a steering group and conduct various consultations
- Update the roadmap by specifying the stages and the structure
- Consider pilot phases



NICE

Inspiring references

- **La Condition Publique, Roubaix**

Why? Regeneration of an early 20th-century industrial brownfield site

Transformation into a “cultural hub”:
a vibrant, hybrid space

How? A regeneration project for a 10,000 m² warehouse
- a former textile packaging site replaced by a transport company during deindustrialisation

Creation of a third place for culture and creativity: a space for artistic expression, festive events and research

A multidisciplinary programme: exhibitions, concerts, workshops, public events

Who? Construction: Albert Bouvy

Renovation: Patrick Bouchain, under the project management of SEM Ville Renouvelée

When? 1902: construction of the building

2004: renovation - conversion to cultural use

Where? Place Faidherbe, Roubaix (Hauts-de-France)

Contact/link <https://laconditionpublique.com/>

info@laconditionpublique.com

- **Les Ateliers des Capucins, Brest**

Why? Its central location has challenged the way the city operates

Maximum conversion of existing industrial heritage

Incorporates the first major sustainable urban district (highly mixed-use, urban spaces designed with usage, climate and wind patterns in mind, entirely pedestrianised, etc.)

Rooted in the city's history: the Grande Halle shipyard and trade union struggles

How? Heritage regeneration: conversion of former industrial workshops into a major cultural facility.

Culture as a driving force: artistic programming and events attracting residents and visitors.

Community space: large nave used as a covered public square.

Diverse programming and audiences (intergenerational, family, tourism, innovation, culture, retail, etc.)

Urban connectivity: strengthened link with the city via the Brest Cable Car. innovation, culture, commerce...)

Who? Bruno Fortin - Atelier de l'île, Brest Métropole, the State, the Navy, the region, the department and the Caisse des Dépôts.

When? 2005

Where? Plateau des Capucins, Brest

Contact/link <https://www.ateliersdescapucins.fr/fr>

VITROLLES

Development of the Fontblanche cultural site

A space for culture and nature connected to the town

By whom? City of Vitrolles

With whom? Aix-Marseille Metropolitan Area, local authorities, resident associations

Where? Vitrolles, Fontblanche estate

When? To be confirmed



- **Description**

The project led by the town of Vitrolles aims to give the Fontblanche estate (a former 19th-century wine-growing estate) a contemporary cultural purpose. The aim for this site is to become a symbol of the commitments the local council has been pursuing for many years.

The challenge of the park's architectural and landscape redevelopment aims to establish a multifunctional hub, better connected to the town centre. The project aims to combine an already established cultural dimension with a strong environmental approach to enhancing its natural heritage: the redevelopment of cultural spaces (the associations' quarter, theatre square, festival ticket office, etc.) and natural spaces (pedestrian areas, heritage garden, meadows, etc.)

The aim of the Domaine project is to create a welcoming space, open to all, capable of serving a wide range of purposes throughout the year.

A master plan and three project reports ("Site Analysis", "Search for a Unifying Theme" and "Project for a Unified and Harmonious Park") were produced by the consortium of architects and landscape architects commissioned between 2024 and 2025 (AC Paysage and MM Architectes).

The involvement of the various stakeholders is one of the project's founding principles.

The creative initiatives led by cultural stakeholders (the Théâtre de Fontblanche, festivals and events hosted) and the associations based on the estate (Charlie Free, Compagnie Evohé) are being called upon to help shape the programme.

Citizens, social stakeholders (daycare centres, community centres, etc.) and environmental groups are involved in the process. This collective effort between the City, local stakeholders and residents aims to make the project a 'territorial learning' initiative

- **Project management, steering and operational coordination**

City of Vitrolles - Project led by three departments: the Environment and Landscape Planning Department, the Planning Department and the Culture and Heritage Department, in consultation with the Community Life Department;

- **Partners to be involved**

- Associations occupying or using the site (Department of Culture / Municipal Performing Arts Programming Unit, Charlie Free, Compagnie Evohé, Municipal School of Visual Arts, Quartiers Libres Bookshop, etc.)
- Residents
- Businesses based in Vitrolles
- Social and environmental stakeholders
- Cultural stakeholders already present on the site, regional cultural partners working alongside the City (CIAM, BIAC, Preljocaj, Cité des Arts de la Rue, Mucem, INSEAMM...) and other cultural stakeholders involved throughout the project.

- **Budget and funding**

Financing arrangements currently being finalised

- **Calendrier et timeline**

The initial phases of work are scheduled for 2027, following participatory workshops with residents and various users;



- **Key considerations**

The project has a strong participatory focus. The methodology for involving the various stakeholders in the process constitutes a phase in its own right. This may delay the initial schedule.

- **Next steps**

- Establishment of a project governance structure
- Defining methods for consulting the public
- Identification of partners and funding
- Pilot phase involving a programme combining cultural, educational and environmental activities

VITROLLES

Inspiring references

- **Parckfarm, Bruxelles**

Why? A park co-designed and co-managed by local residents

An experimental initiative that has become a permanent fixture

How? As part of Parckdesign, a biennial event dedicated to experimenting with public space development, a 3-hectare derelict railway site was proposed as a testing ground to preview a future 20-hectare park

Involvement of the network of residents and associations very active in the neighbourhood: a vegetable garden managed by residents, a dovecote run by a homeless person, and a chicken farm set up by a neighbour

Co-design of spaces and cultural events

A van that transforms into a workshop, kitchen or cinema; a clay pizza oven; a greenhouse repurposed as a meeting place; a concert stage; etc.

Who? TAKTYK & Alive Architecture

Residents of the surrounding neighbourhoods

When? 2014-2015

Where? Brussels, Belgium

Contact/link <https://landezine.com/parckdesign-by-taktyk-and-alive-architecture/>

info@alivearchitecture.eu

- **Floating University, Berlin**

Why? A collaborative initiative between architects, artists and students to rethink the site of the former airport and explore urban transitions

How? Launched in 2018 on a rainwater retention basin at the former Tempelhof Airport - A 22,500 m² site owned by the city - a 2014 referendum voted against a property development project

An on-site laboratory exploring the ecological challenges of a site located in a wetland

Field school, participatory science, performances, etc.

A space for reflection on spatial production strategies

Who? Raumlaborberlin, a collective of architects and designers

When? 2018

Where? Berlin, former Tempelhof Airport

Contact/link <https://raumlabor.net/floating-university-berlin-book/>
info@raumlabor-berlin.de

CORSE

TerraAcqua, Earth-Water

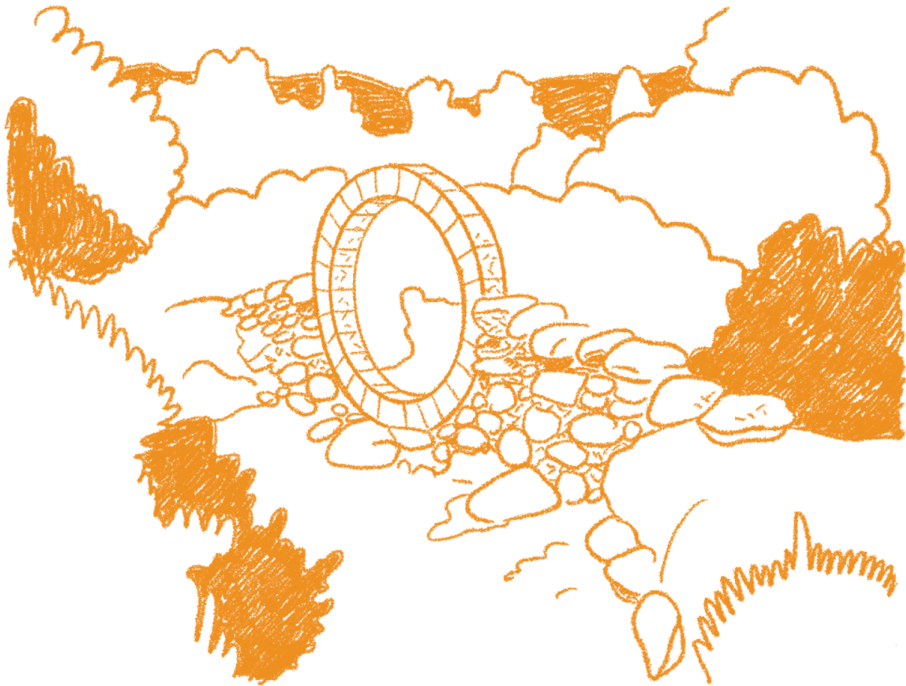
Biodiversity and cross-fertilisation of knowledge
in the Ascu-Moltifau catchment area

By whom? Arterra association - Laboratoriù Culturale

With whom? Corsican Regional Authority, PnrC
municipality and partners

Where? Moltifau, Corse

When? From 2026



- **Description**

TerraAcqua is at once a regional innovation initiative, a cultural driving force and an artistic tool for landscape experimentation, designed to support the Ascu-Moltifau Landscape Plan.

Developed by arterra - Laboratorio Culturale, it aims to roll out new models of intervention that preserve landscapes and ecosystems, at the crossroads of the arts, sciences and vernacular knowledge. Particular attention is paid to the soil, the foundation of all terrestrial development,

The Living Lab provides an opportunity to place cultural and participatory practices at the heart of contemporary socio-ecological challenges (soil and biodiversity erosion, climate change and social divisions, etc.). Among the projects, for example, is the restoration of two springs located on transhumance trails in the mid-mountain range, with the support of local communities and associations. The springs, L'Ochju de i Peduli and Acqua di Casamazzeri, both aim to counter the effects of climate change by creating initiatives that give rise to fabulous stories.

This laboratory foreshadows what the regeneration of a shared culture might look like. It embodies the convergence of ecology and 'regenerative' culture in a spirit of participatory governance that is fully in line with the philosophy of landscape stewardship championed by the arterra association.

- **Management and operational coordination**

The project is led by the arterra - Laboratorio Culturale association, which receives support from the Corsican Regional Council.

- **Partenaires**

The TerraAcqua Living Lab is part of the four-party governance framework established by the **Ascu-Moltifau Biodiversity Landscape Plan** agreement (PnrC, Ascu, Moltifau, arterra).

In collaboration with the Corsica Regional Nature Park (PnrC *Parcu di Corsica*) and the municipalities of *Ascu* and *Moltifau*, in conjunction with the **Natural and Cultural Heritage** and **Territorial Development** departments of the Corsican Regional Authority.

The work carried out on the **Biodiversity Landscape Plan (PPB)**, jointly led by the PnrC and arterra (Ascu-Moltifau sector), is supported by a **technical committee** bringing together local associations and several institutions (OFB, ONF, ODARC, OEC, etc.) as well as the participation of **Moltifau secondary school**.

Research and technical partners: (hydrogeologists from the University of Corsica) and FFPPS (French Federation of Dry Stone Professionals) and the Corsican collective, E Chjole di Corsica.

- **Budget and funding**

- The Laboratoriu culturale is funded by the Corsican regional authority (maximum grant: €40,000 and maximum contribution rate: 60% of operating costs, excluding voluntary contributions and contributions in kind)
- Development of partnerships
- Provision of premises

- **Calendrier / timeline**

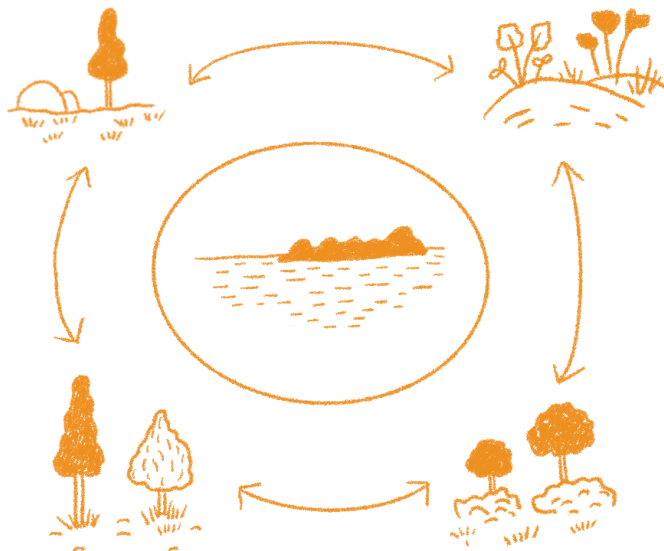
In progress

- **Key considerations**

Beyond storytelling and knowledge transfer, the Living Lab must facilitate the operational implementation phase to align with the Landscape and Biodiversity Plan: in terms of actions, methods and the involvement of residents and local stakeholders.

- **Next steps**

- Develop a cross-cutting roadmap to refine the objectives of the territorial innovation demonstrator.
- Develop a stronger link with the implementation of the Landscape and Biodiversity Plan: translating the cultural approach into an action programme (residencies, public programming, events, workshops, etc.)
- Identify a steering committee and a preliminary budget



CORSE

Inspiring references

- Grand chambord landscape plan

Why? A landscape plan co-developed with local stakeholders and residents

How? A multi-stage, year-long collaborative assessment process:

- Interviews with all local elected representatives
- Landscape assessments through field visits: 7 routes undertaken by around 60 participants to address various issues
- Information stands to raise awareness of the initiative, gather feedback and identify common concerns with residents
- Workshops with technical staff from the community of communes to obtain their technical perspective
- A workshop with a group of farmers

Who? Greater Chambord Community of Communes
Caudex Consultancy

When? July 2023 - spring 2025

Where? Greater Chambord Community of Communes

Contact/link https://www.grandchambord.fr/wp-content/uploads/2024/12/Diagnostic-Plan-Paysage_habitants.pdf
planpaysage@grandchambord.fr

- **On the lauzes trail**

Why? Artistic activation of a hiking trail

Developing a culture of the landscape through an ambitious artistic and cultural programme, linked to the workshop-retreat where artist residencies take place

How? The association Sur le sentier des Lauzes has been tasked with setting up the art trail project by the Mont d'Ardèche Regional Nature Park and public partners

The hiking trail showcases artworks that interpret the landscape

The former farm building “L'échappée” hosts “landscape researchers” in residence (gardeners, filmmakers, dancers, visual artists, writers, etc.) to develop a culture of the landscape

A cultural programme featuring public workshops, training workshops and performances in local homes

Who? Association Sur le sentier des Lauzes

Mont d'Ardèche Regional Nature Park

DRAC, Auvergne-Rhône-Alpes Region, Ardèche Department, Pays Beaume-Drobie Community of Communes, Beaumont Town Hall, Southern Ardèche

When? All year round

Where? Saint-Mélany

Contact/link <https://surlesentierdeslauzes.fr/>
bonjourleslauzes@gmail.com

- **Riwaq Association (Palestine) - preservation of collective memory in rural**

Why? The dissemination of vernacular knowledge (architecture, engineering, etc.) across all their projects to preserve traditions threatened by modernisation and contemporary technologies.

Job creation for marginalised groups through restoration in rural areas to meet an urgent need for community and cultural centres.

How? Qalandiya International, a biennial contemporary art festival set against the backdrop of a former airport and the checkpoint of the same name; artist residencies in the occupied territories

Cultural heritage conservation - a register, archives, heritage trails:

the Register of Historic Buildings (1994-2007) led to the publication of detailed histories, maps and photographs of around 420 villages across 16 districts in the West Bank, Jerusalem and Gaza

the project to rehabilitate 50 villages, following experimental work on heritage preservation in Palestine, as a tool for socio-economic and political development

- Who?** An NGO - working with students, architects, archaeologists and historians
- When?** Since 1991
- Where?** Projects in Palestine: in the Occupied Territories (West Bank and Jerusalem) and in Gaza
- Project to rehabilitate 50 villages in rural areas
- Contact/link** info@riwaq.org
- <https://biennialfoundation.org/biennials/qalandiya-international-palestine-2/>
- <https://riwaq.org/>

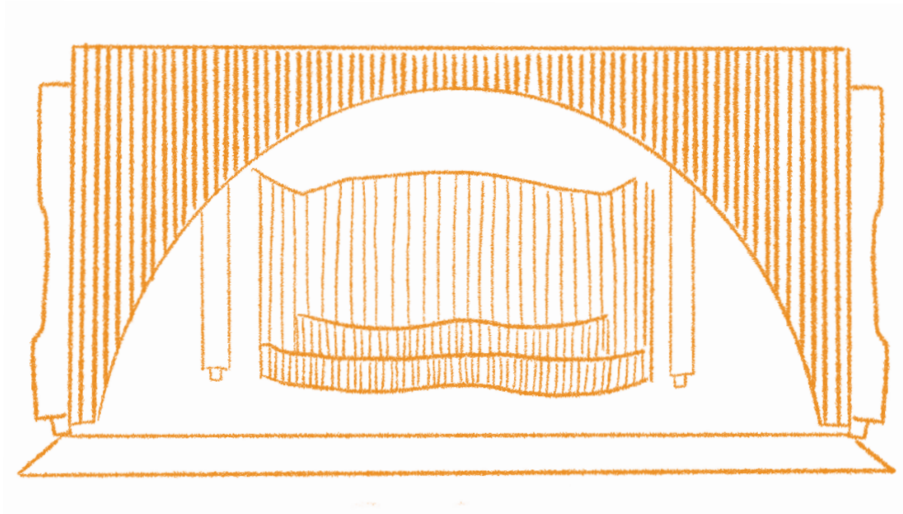


IZMIR

Revitalising the Alsancak district - park and exhibition site

Cultural support for the sustainable green zone
concept - revitalisation of public space

- By whom?** The Mediterranean Branch Directorate of the Izmir Metropolitan Municipality Academy
- With whom?** The Department of Urban Aesthetics and Urban Planning, in collaboration with the Active Citizen Izmir office of the Izmir Planning Agency (IZPA)
- Where?** The Alsancak district
- When?** From 2026 (in parallel with the Re-value programme since 2022)



● Description

In parallel with the Re-Value project, the Alsancak district has been selected as the ideal location for implementing the Sustainable Green Zone (SGZ) concept. The project aims to address these issues by proposing green infrastructure and nature-based solutions, developed using participatory methods.

A key part of the city where major events and gatherings take place, Alsancak is densely populated (residential, commercial and recreational activities). It is the subject of a participatory planning approach. The living lab aims to extend the initiative through two demonstration projects in the neighbourhood:

1 - The public revitalisation of the Tırtıl (Caterpillar)

Street furniture/exhibition unit, opposite the ferry terminal, through cultural and artistic activities. This space has fallen into disuse due to weather conditions, physical deterioration and the loss of its function.

How?

- Through climate-resilient micro-architectural interventions (green coverings, rain gardens, shelters for pollinators, etc.)
- The installation of flexible structures offering increased exhibition capacity,
- And improved visibility in the public space

2 - Professor Dr Adnan Oğuz Akyarlı Park

Located along the **Kıbrıs Şehitleri** pedestrian axis, the busiest in the city, the park lacks shade. Rising temperatures of up to 41.5°C (July 2024) and limited spatial comfort call for a rethink of the layout and redesign of this urban space.

How?

- Through micro-architectural features providing shade and coolness (vegetation cover, rainwater harvesting, etc.)
- Through seating and rest areas that encourage social interaction,
- Through a flexible spatial layout allowing for temporary activities

● **Management and operational coordination**

The Living Lab project will be managed by the Mediterranean Branch Directorate of the Izmir Metropolitan Municipality Academy. Co-management: Directorate of Urban Aesthetics and Urban Planning.

As part of the project, support will be provided by the Active Citizen İzmir office of the Izmir Planning Agency (İZPA), which establishes mechanisms for active and diverse participation between local authorities and citizens.

A governance model based on collaboration with university design faculties and independent design hubs operating in the city will be established.

● **Partners to be involved**

1. Local authorities and public bodies (Izmir Metropolitan Municipality and district municipalities, municipal-affiliated companies)
2. Economic stakeholders and associations
3. Artists and designers (Mediterranean Academy Design Group and creative and innovative hubs and design communities, faculties of fine arts, design, architecture and urban planning at Izmir's universities)

4. Cultural and artistic stakeholders:
Cultural operators and artistic initiatives, galleries, cultural centres and independent event venues, the French Institute, the Italian Cultural Institute, etc.)

- **Funding framework**

- Izmir Metropolitan Municipality
- Local partnerships

- **Key considerations**

The project forms part of a programme launched in 2022. The living lab enables the ongoing projections to be translated into action. It is important to affirm a cultural ambition, not only in terms of activity but also as a lever for transition (awareness-raising, prototyping, etc.). Culture is a means of developing a shared responsibility for resilience.

- **Next steps**

- Identifying stakeholders and artistic and cultural actors; sharing their needs and discussing ideas/proposals
- Transforming ideas into concrete action plans
- Planning the implementation of the project in line with the planned activities

IZMIR

Inspiring references

- **The Baumschule Kulturforum, Berlin**

Why? A free art and horticultural installation open to all

Comprising a total of nearly 200 trees, selected from species suited to the urban climate

Contributing to the revitalisation, enhancement and development of this public space

How? These green oases provide welcome shade in an area otherwise devoid of vegetation and serve as a habitat for insects and birds

A varied programme of events aimed at prompting reflection on the transformation of urban spaces in the face of climate change and presenting visions of a green cultural forum for the future.

Who? Atelier Le Balto, Fanny Brandauer, Klaus Biessenbach, Holger Lindmüller

When? 2023

Where? Berlin's Kulturforum

Contact/link <https://divisare.com/projects/512922-atelier-le-balto-fritz-brunier-hiepler-brunier-baumschule-kulturforumM>
<https://www.lebalto-leblog.eu/auf-dem-dach/>

- **Woonerf Streets & Oasis Schoolyard**

Why? Combating heat islands,

Reducing the number of cars in the city,

A child-friendly city

Creating green corridors

Restoring the permeability of spaces that are often heavily gendered and lacking in community vitality: urban commons

How? An initial technical study focusing on traffic flows, non-motorised modes of transport, parking and needs.

A second phase of consultation with residents, children, parents and local stakeholders.

Participatory workshops aimed at designing, in collaboration with the users concerned, future school streets, 'woonerfs' and school playgrounds.

Open and festive construction sites to support the transition

Who? Cities, CAUE (Council for Architecture, Urban Planning and the Environment)

When? For some time now, but increasingly relevant

Where? Western Europe (Netherlands, Belgium, France)

Contact/link <https://www.observatoire-oasis.fr/>

<https://www.ruecommune.com/guide>

PART III - CONCLUSION

TOWARDS A SECOND OPERATIONAL PHASE



The first phase of the 'Territoires Cultivés' project, coordinated by AVITEM, was implemented as part of the 'Clé en main' decentralised cooperation programme (October 2023 - October 2025) of the Ministry for Europe and Foreign Affairs (DCTCIV-MEAE).

Through the organisation of three open forums (Nice, Vitrolles, Corsica), an international symposium in Izmir and the signing of the Manifesto of Mediterranean Cities of Culture and Ecology, the first phase laid the foundations for a Euro-Mediterranean learning community bringing together elected representatives and local authority departments.

This first phase gave rise to a shared vision at the Euro-Mediterranean level with a view to experimenting with new forms of dialogue between cultural policies, urban planning and transition policies.

- **On-site laboratories**

Building on this momentum, and drawing on the proposals from the Living Labs, a Phase 2 application to the 'Clé en main' programme aims to take the next step towards operationalisation. The aim is to carry out prototype projects linking culture, urban planning and the environment, designed as high-value-added demonstrators.

Conducted simultaneously, these Living Labs are designed to test transferable methods across several Mediterranean local authorities: exchanging best practices through field experiences, and generating knowledge and tools to embed culture as a reflex in the management of territorial transformation projects.

As discussed in Booklet 2 (Culture as Territorial Engineering), cultural initiatives involved from the outset of a planning project facilitate dialogue, ownership and the involvement of everyone. Through its actions and narratives, culture

contributes to a better understanding of the issues at stake and strongly unites stakeholders – public institutions, cultural actors, scientists, associations, users and residents.

- **Cultural cooperation, territories and transitions**

In this context, a second phase of the application is fully in line with the priorities of decentralised cooperation promoted by the Ministry for Europe and Foreign Affairs. It will build on the partnership framework established by AVITEM during the first phase and will meet the requirements of the DCTCIV's 2026 'Turnkey' call for projects, closely linking territorial innovation, international cooperation and the creation of the commons.

It aims for an operational timeframe of 2027-2028, with particular attention paid to the robustness of the mechanisms: structuring of local and multi-stakeholder governance, alignment with planning timetables, consolidation of economic models, and the establishment of shared monitoring and evaluation mechanisms. In an evolving institutional context, the participation of partners will be subject to consultation and approval by local authorities.

Beyond the implementation of projects, this second phase has a strategic ambition: to position 'Territoires Cultivés' as a benchmark demonstration programme, capable of informing public policy and contributing to the promotion of French and Euro-Mediterranean expertise in the fields of agriculture and territorial transitions. The aim is to develop replicable, models adapted to diverse contexts, and to strengthen the capacity of territories to cooperate in the face of contemporary challenges.

'Territoires Cultivés' establishes itself as a structuring framework serving a renewed diplomacy of territories, where culture reaffirms its key role in cooperation.

APPENDIX I

FORM/QUESTIONNAIRE

This questionnaire enabled the partners of the “Territoires Cultivés” programme to propose one or more projects - current or future - on which a related cultural initiative could be based. The forums and the Izmir symposium did indeed help to identify spatial planning or territorial transition projects with significant cultural potential.

PROPOSED METHOD

SEQUENCE 1 - Project definition phase - PROJECT MANAGEMENT
Establishing the foundations of a project emerging from a territory

Step 1

Establishing the foundations of a project emerging from a territory

Objectives	<ul style="list-style-type: none">• Clarify and define the project expectations (scope, formulation of questions, ambitions, citizen participation...)• Identify socio-political and environmental issues / Territorial context (context approach through interviews, documentary research)• Identify leverage points (stakeholders, initiatives, local specificities) and resources in the territory that may resonate with the project• Define pre-operational objectives, evaluation indicators, and monitoring
Response (2 lines)	<p>→ Identification of the project manager (Who leads the project? Who funds it? etc.) <i>**Find co-management shared by at least 2 departments, e.g., urban planning / development / environment and culture**</i></p> <p>What is the governance for your living lab? Which departments carry it, who are the project teams, what is the role of the local authorities?</p>

<p>Response (4-6 lines)</p>	<p>What are the strategic objectives of your living lab? How can it serve as a demonstrator of a “Culture-Territory-Transition” innovation?</p>
<p>Contribution of the cultural approach</p>	<p>→ Identification of cultural stakeholders - what “co-management”?</p> <ul style="list-style-type: none"> • Reframing, stepping aside, lateral visions and perspectives... • Evolution of the planner’s tools → evolutionary urbanism - urbaculture - narrative urbanism • Expertise in assembling development projects – the project takes shape like a guide-plan • Expertise in setting up cultural projects: intervention agility (event production, operational setup, partnerships...) • Participatory / implicating / citizen-oriented dimension (sense of involvement) • Methods of mediation and interaction with stakeholders and residents (publics) • Project-school dynamics → objects of learning and co-learning
<p>Response (2 lines)</p>	<p>Which artistic and cultural actors could be associated (artists, companies, cultural centers, curators...)?</p>

<p>Stakeholders to mobilize</p>	<ul style="list-style-type: none">• Local authority: elected officials, departments, and project managers + inter-municipal structures, etc.• Project leaders (organizations, institutions, regional parks, associations, project actors...)• Cultural operators (creation and dissemination organizations, third places, artists...)
<p>Response (2 lines)</p>	<p>Which stakeholders should be included for open governance (parks, businesses, associations, citizens, etc.)?</p>

Step 2

Launch the first narrative paths (editorial line) of the project in connection with the territory

Objectives	<p>→ Identify the transition challenge of a territory → to find the SUBJECT</p> <ul style="list-style-type: none">• Define the project narrative through a specific editorial line that resonates with the territory,• Based on local surveys and diagnostics• Strengthen the definition of the project through the first narrative threads• Mobilize stakeholders and residents around the editorial axis / narrative
Response (4 à 6 lines)	<p>What are the intentions of your living lab? What could it “trigger” in the territory (new uses, ripple effects for other actors, investment programs...)?</p>
Apport de la culture	<p>→ How can an artist or cultural actor work on this subject / respond to or explore this issue?</p> <ul style="list-style-type: none">• Based on field surveys, specific observations, and artistic investigations, suggest narrative hypotheses capable of aggregating or combining the contributions of different stakeholders• Mobilization and involvement of residents and local actors• First “testing” actions (presentations of references, experiences and immersions in the territory, workshops...)

<p>Response (4 à 6 lines)</p>	<p>What effects are expected to accelerate transition issues and provide educational value for different audiences?</p>
<p>Stakeholders to mobilize</p>	<ul style="list-style-type: none"> • Local authority: elected officials, departments, and project managers • Project leaders (organizations, institutions, regional parks, associations, project stakeholders...) • Cultural operators (creation and dissemination organizations, third places, artists...) • Residents • AMO in “cultural urbanism”



**Territoires
Cultivés**

REFERENCES BENC

Produced by POLAU – pôle arts&urba



CHMARK

Urbanisme for “Territoires Cultivés” - AVITEM

TD
CORSICA
CIVITÉ DE CORSE

MÉTROPOLE
NICE CÔTE D'AZUR

Vitrolles
vivre ensemble

AVI ART
VENUE
IZHIR

POL
AU
arts-
urba-
nisme

Review of the objectives and cha

A re-tooling of territorial policies with objectives to:

- Regenerate resilience and relational capacities to confront methods/interventions
- Regenerate democratic dynamics through Mediterranean governance
- Regenerate territorial representations through systemic world
- Regenerate center-periphery ties by enabling exchange
- Regenerate resources through new narratives, revived a cultures

Challenges - “ Territoires cultivés”

Confront climate change via cultural

mean values such as cosmopolitanism and cultural

dynamic, non-anthropocentric approaches to the living

change and valuing cultural diversity

and ancestral know-how, and recognition of popular

BENCHMARK “TERRITOIRES C

Reference examples for the hypotheses of living-lab project initiative

NICE

Title - The Marine Protected Area: By and For Everyone (Project 1)

Subtitle: Promoting Cultural and Participatory Activities for the Label

Title - Gare Sud: A Discovery Hall and Cultural Center (Project 2)

Subtitle: A contemporary cultural purpose for a heritage site

VITROLLES

Title - Development of the Fontblanche cultural site

Subtitle - A space for culture and nature connected to the city

CORSICA

Title - TerraAcqua, Earth-Water

Subtitle - Biodiversity and cross-fertilization of knowledge in the Ascu-M

IZMIR

Title - Refreshing the Alsancak neighborhood - park and exhibition site

Subtitle: Cultural support for the sustainable green zone concept - revita

“CULTIVÉS”

Initiatives led by partner local authorities of the network:

du-Moltifau watershed

site
vitalization of public space

THEME – Parliaments of Nature

ral Entities

reference for Nice

vers un
parlement
de **Loire**

representation of nature

institutional fiction

citizen participation

CONTACT / LINKS

<https://www.parlementdeloire.fr/>

parlementdeloire@gmail.com

UN PARLEMENT DE LOIRE

WHY IS IT RELEVANT?

- A collective, unifying approach
- Revealing and supporting local attachments

HOW?

- Landscape of Alerts: a collective approach
- A river parliament defending the rights and voices of the Loire River
- A fiction and narratives
- A Loire Manifesto
- 13 public hearings of the Loire Parliament

WHO?

Collective Towards a Loire Parliament, initiated by POLAU – Arts & Urban Planning Pole

WHEN

Since 2019

WHERE?

Loire watershed

reference for Nice



WHO?

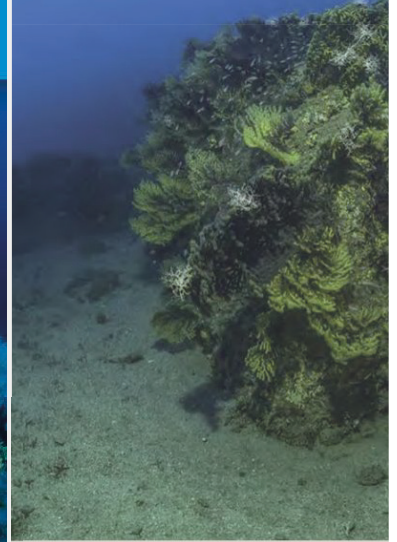
Calanques National Park, Atelier Coloco, Andromède Océanologie
Pierre David, Gilles Clément

WHEN?

2019

WHERE?

Underwater zone of the Calanques



254

Paysage sc

UNDERWATER LANDSCAPE PLAN – CALANQUES NATIONAL PARK

WHY IS IT RELEVANT?

– Innovative approach to developing and sharing knowledge about underwater landscapes

– A cultural-driven landscape plan aimed at public awareness

HOW?

– Commissioned by the Calanques National Park

– Multidisciplinary study: landscape designers, oceanographers, historians, maritime practitioners

– Strategic goals: global vision of underwater landscapes & issues

– Operational goals: support preservation and biodiversity

– Educational goals: increase & share knowledge; bridge scientists and maritime communities

– Mediation actions: tools for professionals & general public, permanent visitor spaces, events showcasing artists and underwater-landscape knowledge

age sous-marin de la Cassidaigne, profondeur – 100m – Laurent Balesta, Andromède Océanologie

reference for Nice

Livret de connaissances pour la création d'une aire marine éducative

WHO?

Primary schools to high schools (the first was a primary school in French Polynesia)

The French Office for Biodiversity (OFB)

WHEN?

2014-2015

The concept of educational areas was born in 2012, in the Marquesas Islands (French Polynesia).

WHERE?

In France and in French territories



a

#environmental education

#pedagogical innovation

#eco-citizenship



EDUCATIONAL MARINE AREAS

WHY IS IT RELEVANT?

Involvement of schoolchildren in caring for coastal ecosystems

Program supervised by the OFB, which is also available for non-coastal environments

HOW?

The Coastal Educational Areas program allows schools to take responsibility for a small section of coastline: biodiversity facilitators are on hand to teach them how to care for it.

Teaching young people about eco-citizenship and sustainable development

Reconnecting students with nature and their local area

Promoting dialogue between students, stakeholders involved in maritime activities (users, economic actors), and natural area managers, etc.

CONTACT / LINKS

<https://www.ofb.gouv.fr/les-aires-marines-educatives>
aireseducatives@ofb.gouv.fr



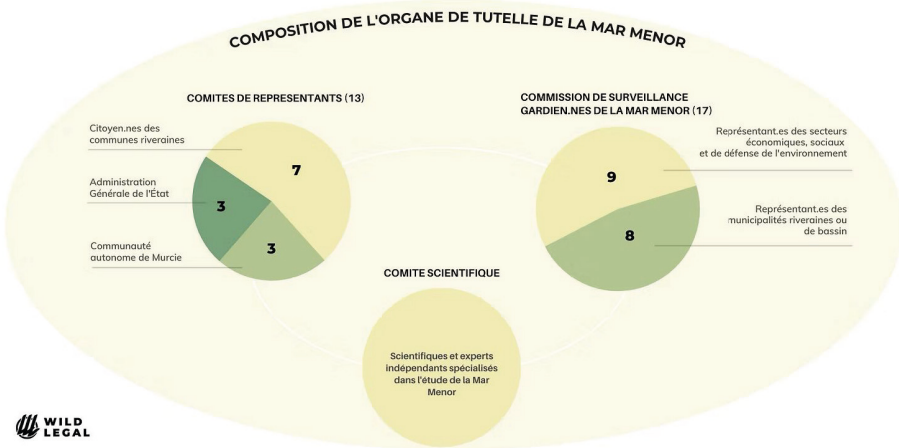
© Romain Hubert / Agence française pour la biodiversité



OATEA

reference for Nice

REPRÉSENTATION ET GOUVERNANCE DE LA MAR MENOR



WHO?

- The largest coastal lagoon in Mediterranean Spain
- A citizen mobilization led by Teresa Vicente, philosophy professor, who launched the petition (more than a ½ million signatures)
- Eduardo Salazar, public law professor and legal representative of the Mar Menor

WHEN

2022

WHERE?

South of Spain (135 km²)

WHY

It is the
On Se
legal e

The la
die-of

HOW

Follow
marin
(Educa
adopt

MAR MENOR

Recognition of a legal entity

WHY IS IT RELEVANT?

is the first time in Europe that a natural ecosystem has been granted legal entity. In September 30, 2022, a law was adopted recognizing the Mar Menor lagoon (Spain) as a legal entity — a “biological, environmental, cultural, and spiritual subject.”

The lagoon suffered severe pollution from intensive agriculture; repeatedly, mass fish die-offs occurred due to lack of oxygen.

HOW?

Following “the disappearance of 85% of its flora, and in 2019 and 2021 the suicide of marine fauna species which, by the ton, washed up along the lagoon’s shores” (Eduardo Salazar), a citizen movement circulated a petition, which eventually led to the adoption of the law.

CONTACT / LINKS

<https://www.wildlegal.eu/post/decryptage-mar-menor-la-lagune-espagnole-et-ses-nouveaux-droits>

<https://www.iea-nantes.fr/fr/actualites/lagune-mar-menor>

THEME – abandoned & vacant

t constructions

reference for Gare Sud Nice

WHO?

Construction : Albert Bouvy

Rehabilitation : Patrick Bouchain, under the supervision of the SEM Ville Renouvelée

WHEN?

1902: building construction

2004: rehabilitation – cultural conversion

WHERE?

Place Faidherbe, Roubaix (Hauts de France)



#urbain rehabilitation

#industrial heritage

#third place

WHY

Renov

Trans

HOW

A ren
facilit
deinc

Creat
resea

A mu

LA CONDITION PUBLIQUE, ROUBAIX

WHY IS IT RELEVANT?

renovation of an early 20th-century industrial brownfield site

transformation into a “cultural hub”: a vibrant, multifaceted space

HOW?

renovation project for a 10,000-square-meter warehouse—a former textile packaging facility that was taken over by a transportation company during the era of industrialization

creation of a cultural and creative hub: a space for artistic exhibitions, festive events, and research

multidisciplinary program: exhibitions, concerts, workshops, and public events



CONTACT / LINKS

<https://laconditionpublique.com/>

info@laconditionpublique.com

reference for Gare Sud Nice

WHO?

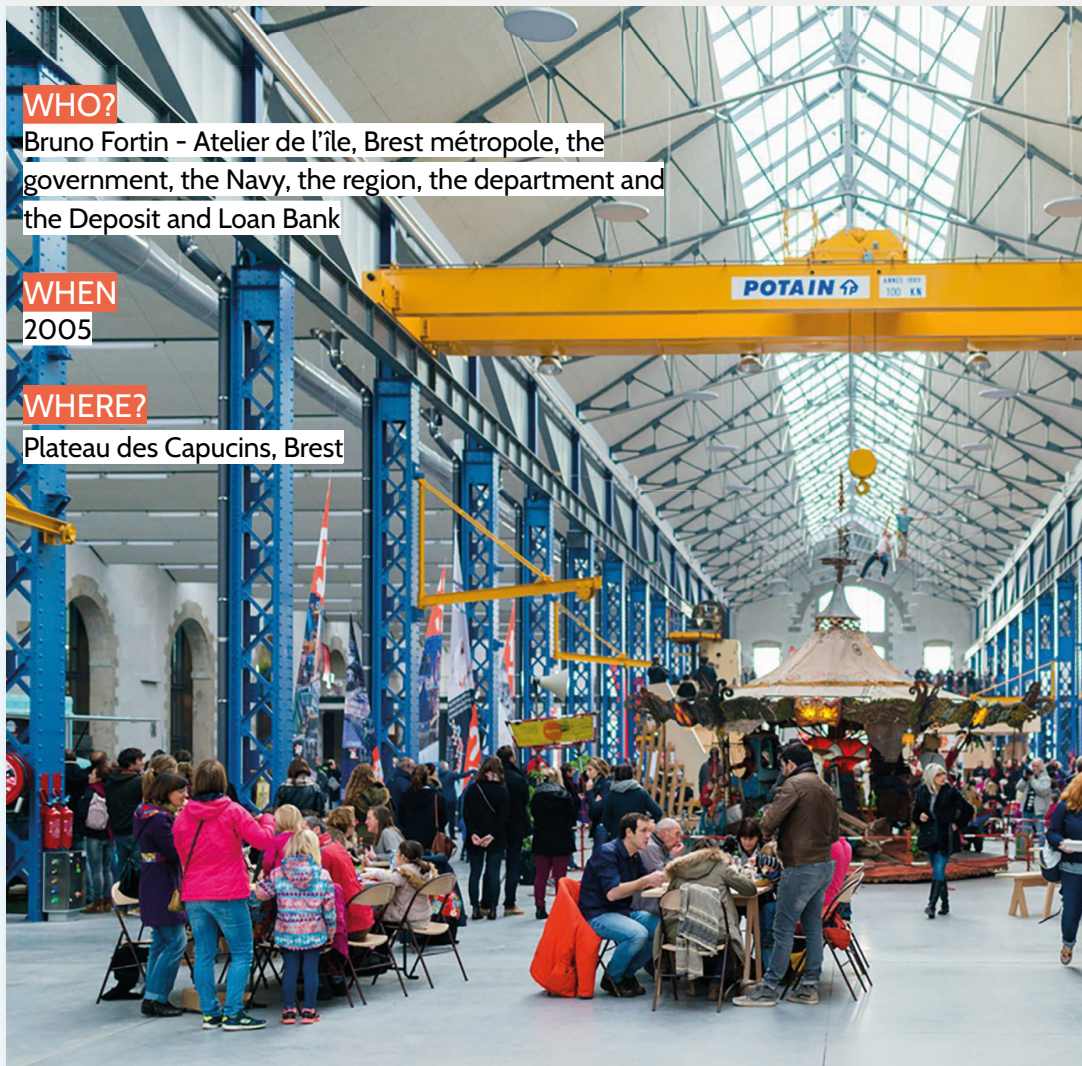
Bruno Fortin - Atelier de l'île, Brest métropole, the government, the Navy, the region, the department and the Deposit and Loan Bank

WHEN

2005

WHERE?

Plateau des Capucins, Brest



LES ATELIERS DES CAPUCINS, BREST

WHY IS IT RELEVANT?

- > Its central location has prompted a reevaluation of how the city operates
- > Maximum reuse of existing industrial heritage
- > Includes the first major sustainable urban neighborhood (high diversity, urban spaces designed with usage, climate, and wind patterns in mind, entirely pedestrian-friendly, etc.)
- > Rooted in the city's history: the Grande Halle shipyard and labor struggles

HOW?

Heritage restoration: conversion of former industrial workshops into a major cultural facility.

Culture as a driving force: artistic programming and events that attract residents and visitors.

Community space: a large nave used as a covered public square.

Diverse programming and audiences (intergenerational, family, tourism, innovation, culture, commerce, etc.)

Urban connectivity: strengthened connection to the city via the Brest Cable Car.

CONTACT / LINKS

<https://www.ateliersdescapucins.fr/fr>

references for Gare Sud Nice



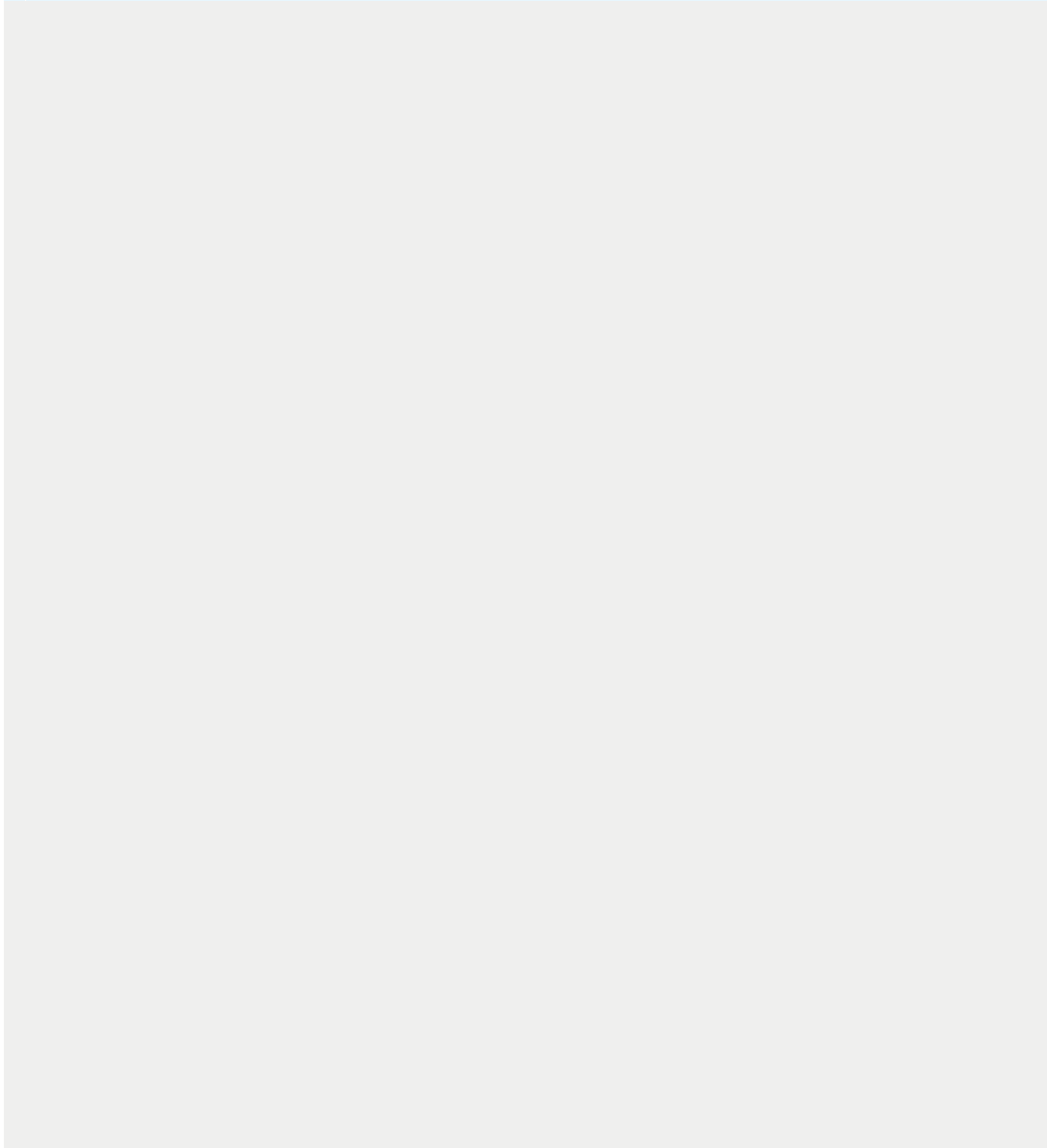


Marché des Douves, Bordeaux

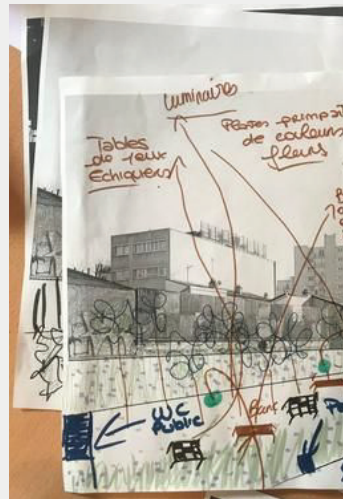
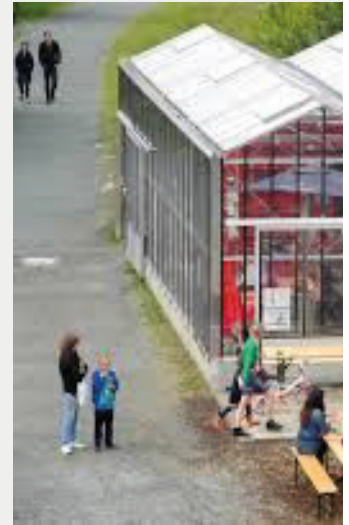


Gare de l'utopie, Vertolaye - PNR Livradois Forez

THEME - urban parks



reference for Vitrolles



PARCKFARM, BRUSSELS



WHY IS IT RELEVANT?

- A park co-designed and co-managed by residents
- An experimental approach that became permanent

HOW?

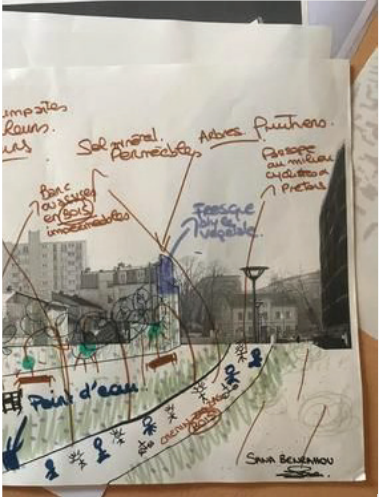
- Part of Parckdesign, a biennial dedicated to public-space experimentation

– A 3-hectare railway abandoned industrial site used as a testing ground for a future 20-hectare park

– Strong involvement of resident networks and local associations: resident-managed garden, a pigeon loft managed by a homeless person, neighbors raising chickens, etc.

– Co-design of spaces and cultural activities

– A van that transforms into a workshop, kitchen, cinema; a clay pizza oven; a greenhouse redesigned as a social space; a concert stage; etc.



CONTACT / LINKS

<https://landezine.com/parckdesign-by-taktyk-and-alive-architecture/>
hitecture/
info@alivearchitecture.eu

reference for Vitrolles / Corse

WHO?

raumlaborberlin, collective of architects and designers

WHEN?

2018

WHERE?

Berlin, former Tempelhof Airport



#urban ecology

#available land

#territory-school

FLOATING UNIVERSITY, BERLIN

WHY IS IT RELEVANT?

A partnership approach between architects, artists, and students to rethink the former airport space and address urban transitions.

HOW?

- Opened in 2018 on a rainwater retention basin of the former Tempelhof Airport
- A 22,500 m² site belonging to the city
- In 2014 a referendum blocked a real-estate project
- On-site laboratory addressing ecological issues in a wetland area
- Field school, participatory science, performances
- A space for reflecting on spatial production strategies



CONTACT / LINKS

<https://raumlabor.net/floating-university-berlin-book/>
info@raumlabor-berlin.de

THEME – cartographies / atlases

ses

reference for Corsica

WHO?

Greater Chambord Community of Municipalities
Caudex urban planning firm

WHEN?

July 2023 – Spring 2025

WHERE?

The Greater Chambord area



SYNTHÈSE DU DIAGNOSTIC ET RÉCIT COLLECTIF PLAN DE PAYSAGE DU GRAND CHAMBORD

UN TRIPTYQUE EN RECHERCHE D'ÉQUILIBRE : LE VAL DE LOIRE, LA SOLOGNE
ET LE DOMAÎNE



WHY IS IT RELEVANT?

A landscape plan co-constructed
residents.

COMMENT ?

- A one-year co-constructed di
- Interviews with all elected offi
- Landscape readings during 7 fi
around 60 participants
- Public engagement stands for
gathering perceptions, revealing
- Workshops with community to
insights
- A workshop with farmers

#co-construction

#citizen participation

#territorial strategy

LANDSCAPE PLAN OF THE GREATER CHAMBORD

ected with stakeholders and

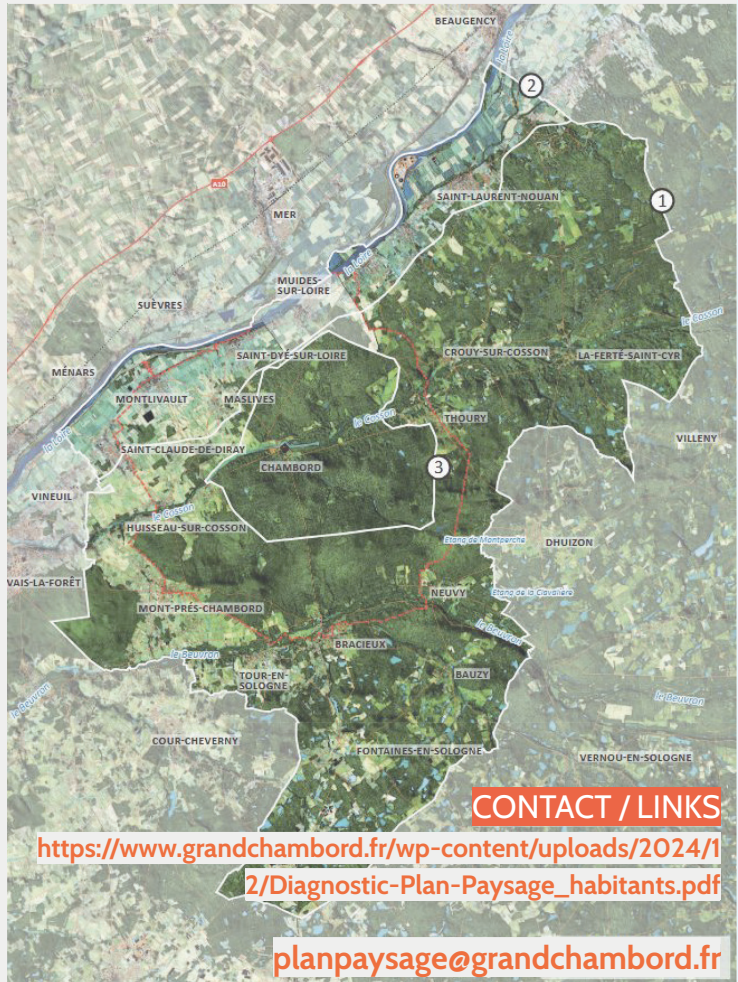
d diagnostic:

officials

g 7 field itineraries with

s for communication,
ling shared issues

ty technicians for technical



RIWAQ - PALESTINE

Preserving collective memory in rural areas

IS IT RELEVANT?

Leading of vernacular knowledge (architecture, engineering, etc.) in all their projects to the traditions threatened by modernization and contemporary technologies. Job creation for marginalized groups through restoration in rural areas to meet an urgent need for community and centers.

Qalandiya International, a contemporary art biennial following the traces of a former airport and checkpoint of the same name; artist residencies in the occupied territories

Heritage conservation - a register, archives, heritage trails:

Register of Historic Buildings between 1994-2007 led to the publication of detailed registry, maps, and photos of approximately 420 villages in 16 districts of the West Bank, Jerusalem, and Gaza

Project to rehabilitate 50 villages, following experimental work in heritage preservation in Palestine, as a tool for socio-economic and political development

CONTACT / LINKS

info@riwaq.org

<https://biennialfoundation.org/biennials/qalandiya-international-palestine-2/>

<https://riwaq.org/>

reference for Nice / Izmir



**GUIDE
MÉTHODOLOGIQUE**

WHO?
The coastline conservatory
Produced by : Alain Freytet, landscaper d.p.l.g.

WHEN?
2019

WHERE?
The coastlines of France

**Les paysages
du Conservatoire du littoral**

De la reconnaissance
au projet

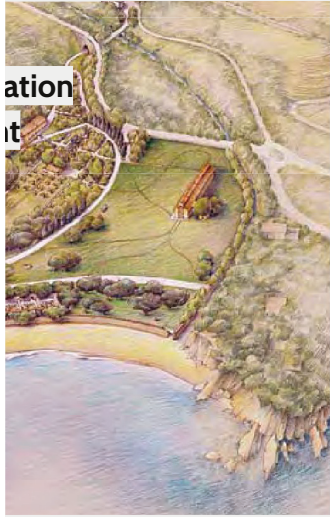
Conservatoire du littoral

FONDATION
P&G
protection
littoral

AVEC LE SOUTIEN DE



METHODOLOGICAL GUIDE OF THE COASTAL CONSERVANCY ON LANDSCAPES



WHY IS IT RELEVANT?

– Methodological guide addressing the sensory dimension of landscape approaches

– Highlights potential for public engagement and mediation

HOW?

– Provides analytical tools for coastal landscape projects

– Emphasizes surveying, contemplation, drawing

– Landscape as a sensitive entry point enabling public engagement: via rangers, artistic actions, mediators, etc.



CONTACT / LINKS

<file:///C:/Users/33768/Downloads/Guide-paysage-PDF.pdf>

<https://www.conservatoire-du-littoral.fr/41-paysages.htm>

reference for Izmir

WHO?

Region of Brittany

Association Eau et Rivières de Bretagne

Permanent Assembly of Water-Committee Presidents

Supported by OFB

#natural/imma

#citizen partici

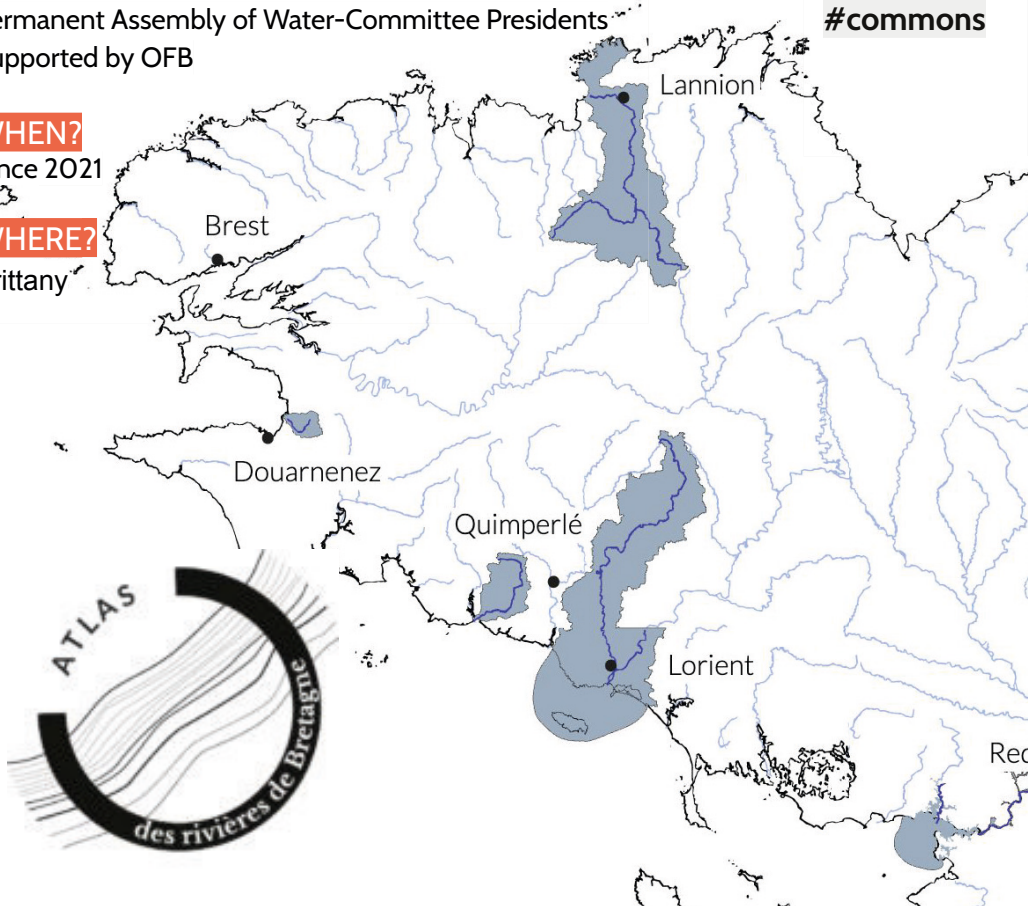
#commons

WHEN?

Since 2021

WHERE?

Brittany



SOCIOCULTUREL ATLAS OF BRETON RIVERS

Material heritage
Participation



WHY IS IT RELEVANT?

- Water is understood as a cultural link between territories
- A participatory cultural approach rebuilding ties to rivers

HOW?

- Emerged from a collective question: How do we care for a river together?
- Encourages dialogue with living systems through sensitive experiences: discussions, crossings, maps
- Regional call for projects: communities respond with initiatives tied to specific rivers

CONTACT / LINKS

<https://atlas-rivieres.bzh/>

THEME – tangible & intangible

e heritage

reference for Izmir

WHO?

Atelier Le Balto, Fanny Brandauer, Klaus Biessenbach,
Holger Lindmüller

WHEN?

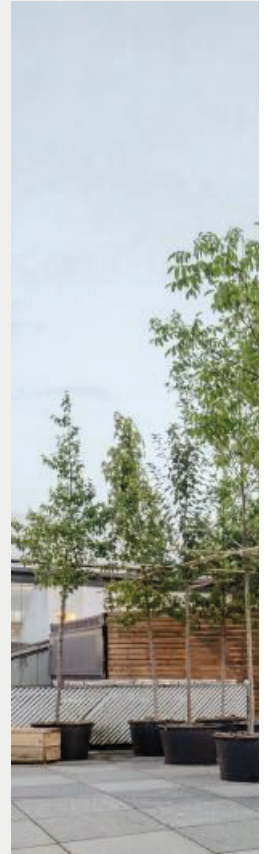
2023

WHERE?

Berlin's Kulturforum

#environment & climate

#sensibilisation & oasis of freshness



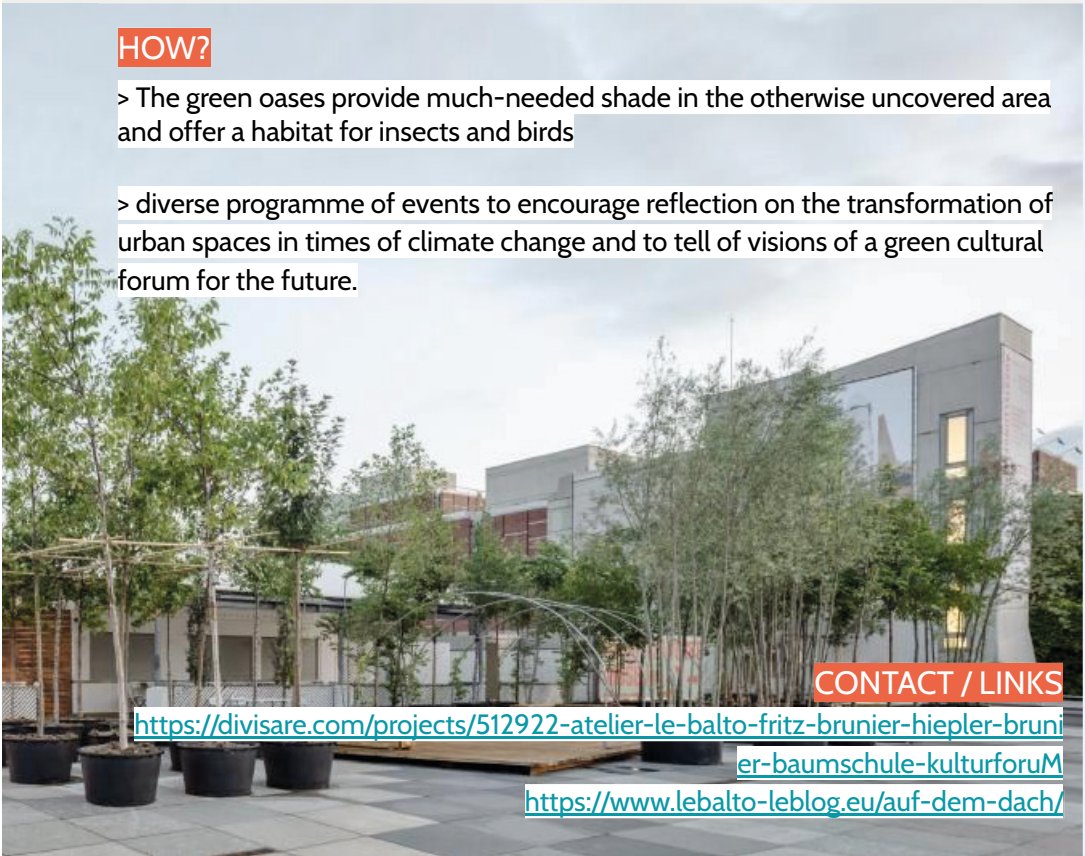
THE BAUMSCHULE KULTURFORUM - BERLIN

WHY IS IT RELEVANT?

- > Free and accessible artistic and horticultural installation
- > With a total of almost 200 trees which were chosen from species tolerant of the urban climate
- > Helping to revitalise, enhance and develop this public space

HOW?

- > The green oases provide much-needed shade in the otherwise uncovered area and offer a habitat for insects and birds
- > diverse programme of events to encourage reflection on the transformation of urban spaces in times of climate change and to tell of visions of a green cultural forum for the future.



CONTACT / LINKS

<https://divisare.com/projects/512922-atelier-le-balto-fritz-brunier-hiepler-brunier-baumschule-kulturforumM>

<https://www.lebalto-leblog.eu/auf-dem-dach/>

reference for Izmir



WHO?

Cities, CAUE (French Council for Architecture, Urban Planning, and Environment)



WHEN?

Since a long time but more and more relevant

WHERE?

Western Europe (Netherlands, Belgium, France)



#public spaces & climate

#inclusive & oasis of freshness

WOONERF STREETS & OASIS SCHOOLYARD

WHY IS IT RELEVANT?

- > Against heat islands,
- > Reduce the presence of cars in cities,
- > A child-friendly city
- > Create green corridors
- > Restore permeability to spaces that are often highly gendered and lack collective vitality, urban commons

HOW?

- > An initial technical study of traffic flows, non-motorized transportation, parking, and needs.
- > A second phase of consultation with residents, children, parents, and local stakeholders.
- > Participatory workshops to collaboratively design future school streets, woonerf, and schoolyards with the users involved.
- > Open and festive construction sites to support the transition



CONTACT / LINKS

<https://www.observatoire-oasis.fr/>

<https://www.ruecommune.com/guide>

reference for Corsica



WHY IS IT REL

Artistic activation

Development of
connection with t

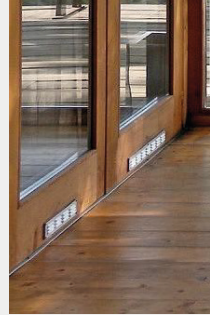
HOW?

The Sur le sentier
behalf of the Mor

Hiking trail featur

The old farm buil
filmmakers, danc

A cultural program



ON THE LAUZES TRAIL

RELEVANT?

tion of a hiking trail

t of a landscape culture through an ambitious artistic and cultural program, in
with the workshop-refuge where artistic residencies take place

ntier des Lauzes association is responsible for implementing the art trail project on
Mont d'Ardèche Regional Nature Park and its public partners.

atures artworks that express the landscape

building "L'échappée" hosts "landscape researchers" in residence (gardeners,
lancers, visual artists, writers, etc.) to develop a culture of landscape

gram with public workshops, training projects, and performances in local homes

CONTACT / LINKS

<https://surlesentierdeslauzes.fr/>

bonjourleslauzes@gmail.com

Credits

These documents were produced under the overall coordination of AVITEM, lead partner of the project, in partnership with the Nice Côte d'Azur Metropolis, the City of Vitrolles, the Collectivity of Corsica, and the Izmir Metropolitan Municipality. They were funded through the "Clés en main" call for projects launched by the French Ministry for Europe and Foreign Affairs.

They were written by the expert committee led by POLAU: Maud Le Floc'h, Valérie Astesano, Jean-François Chougnat, Amine Benaïssa, with the support of Cléo Smits.

Lead author

Maud Le Floc'h and et Cléo Smits

With contributions from Marie Baduel and Sevinç Ünal (AVITEM), as well as representatives of the partner authorities: Nathalie Siran (Nice), Valérie Astesano (Vitrolles), Andrée Grimaldi and Jean-Jacques Ottaviani (Collectivity of Corsica), and Ezgi Sairoglu, Ayşengül Sabuktay, Maya Arıkanlı Özdemir, Görkem Kiter (Izmir Metropolitan Municipality).

Editorial coordination

Sevinç Ünal

Edition

March 31, 2026 - AViTeM - avitem.fr

Editorial design

Studio Bonne Feuille (Audrey Desanti & Milène Mahéroult)
studiobonnefeuille.com

Illustration

Tara Keogh - tarakeogh.com

